

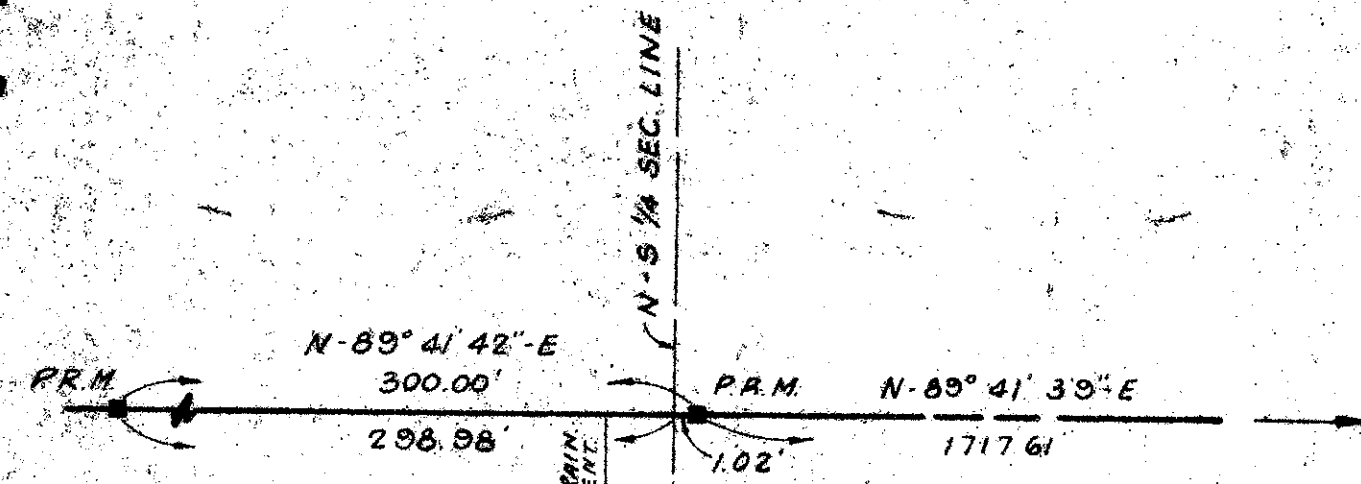
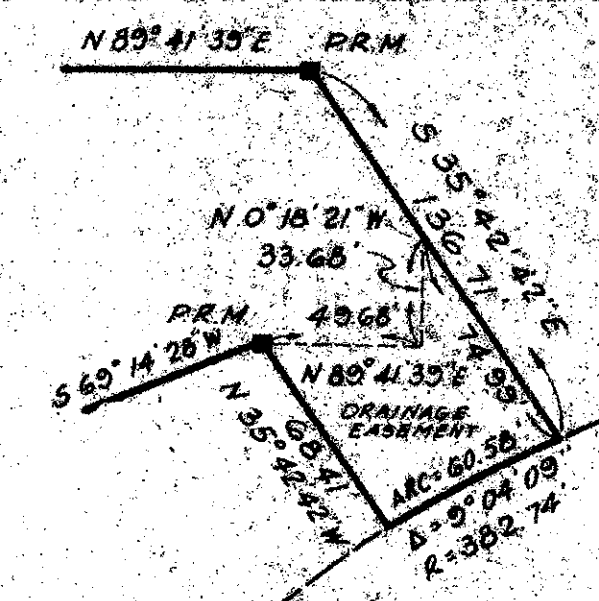
# PLAT NO. 4 QUAIL RIDGE

(A PLANNED UNIT DEVELOPMENT)

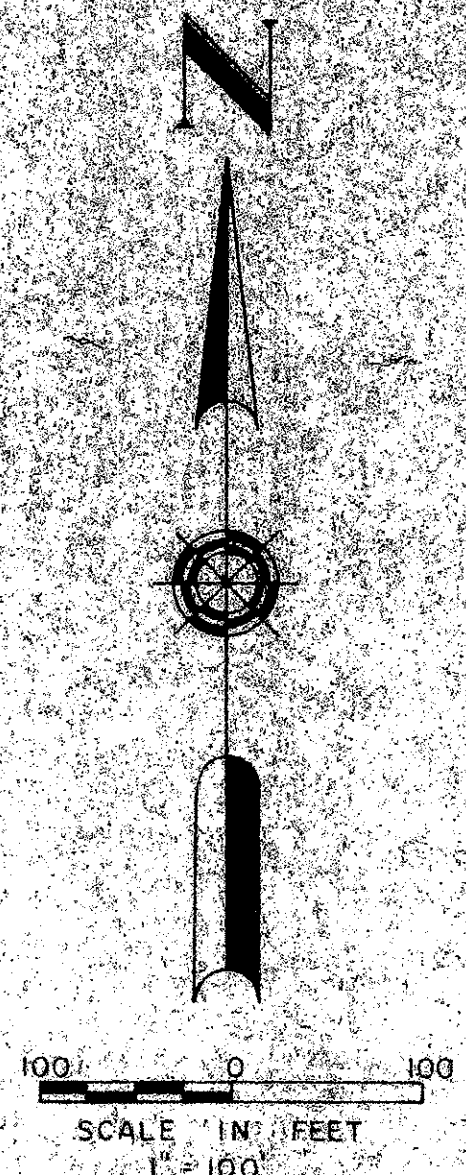
BEING A SUBDIVISION OF A PORTION OF THE N 1/2 OF  
SECTION 36, TOWNSHIP 45 SOUTH, RANGE 42 EAST,  
PALM BEACH COUNTY, FLORIDA  
IN 2 SHEETS SHEET NO. 2

MARCH 1976

36



NOTE  
THIS HAS BEEN ADDRESS  
SEE FILE IN MY OFFICE



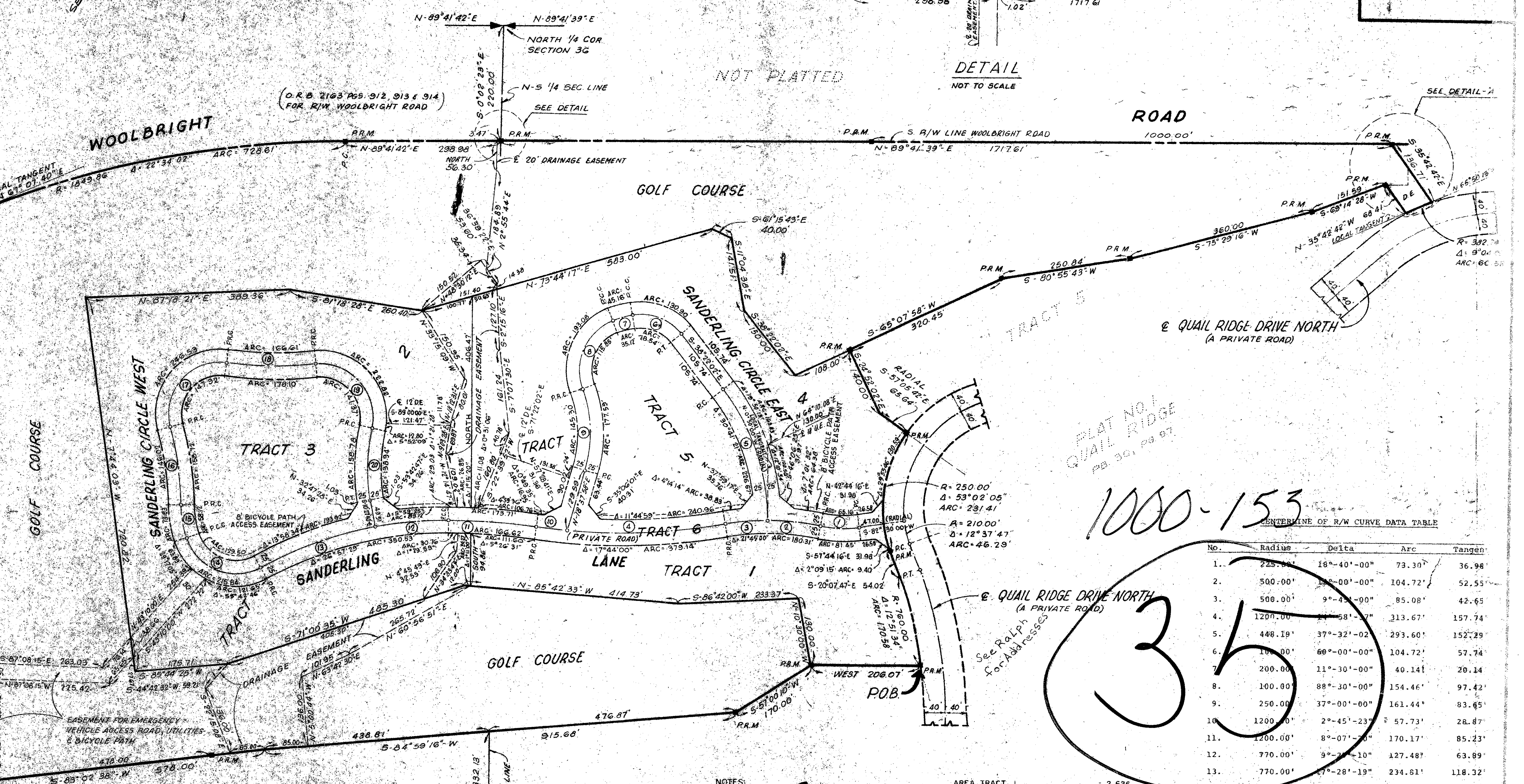
(O.R.B. 2374 PG. 1752 FOR R/W WOOLBRIGHT ROAD)

SCALE 1\"/>

NOT PLATTED

NOT PLATTED

NOT PLATTED



1000-153

See R/Lph for Addresses

No.	Radius	Delta	Arc	Tangen
1.	225.00'	18°-40'-00"	73.30'	36.98'
2.	500.00'	18°-00'-00"	104.72'	52.55'
3.	500.00'	9°-45'-00"	85.08'	42.65'
4.	1200.00'	11°-58'-37"	313.67'	157.74'
5.	448.19'	37°-32'-02"	293.60'	152.29'
6.	100.00'	60°-00'-00"	104.72'	57.74'
7.	200.00'	11°-30'-00"	40.14'	20.14'
8.	100.00'	88°-30'-00"	154.46'	97.42'
9.	250.00'	37°-00'-00"	161.44'	83.65'
10.	1200.00'	2°-45'-23"	57.73'	28.87'
11.	1200.00'	8°-07'-30"	170.17'	85.23'
12.	770.00'	9°-21'-10"	127.48'	63.89'
13.	770.00'	27°-28'-19"	234.81'	118.32'
14.	100.00'	98°-55'-58"	172.67'	116.95'
15.	210.00'	18°-00'-00"	65.97'	33.26'
16.	600.00'	14°-33'-00"	152.37'	76.60'
17.	100.00'	113°-00'-00"	197.22'	151.08'
18.	750.00'	13°-10'-00"	172.35'	86.56'
19.	100.00'	108°-00'-00"	188.50'	137.64'
20.	375.00'	22°-44'-39"	148.86'	75.42'

QUAIL RIDGE

32/45/42

32/36

- NOTES
- PERMANENT REFERENCE MONUMENT (P.R.M.)
  - PERMANENT CONTROL POINT (P.C.P.)
  - D.E. DRAINAGE EASEMENT
  - U.E. UTILITY EASEMENT
- MINIMUM SETBACK REQUIREMENTS
- FRONT 25 FEET
  - SIDE (interior) 15 FEET
  - SIDE (corner) 25 FEET
  - REAR 25 FEET

- AREA TRACT 1 2.626
- AREA TRACT 2 6.306
- AREA TRACT 3 2.318
- AREA TRACT 4 4.544
- AREA TRACT 5 .967
- AREA TRACT 6 3.813
- AREA GOLF COURSE 28.492 ACRES
- TOTAL AREA 50.066 ACRES
- TOTAL DRAINAGE 62
- DENSITY 1.2 PER GROSS ACRE

MOCK, ROOS & SEARCY, INC.  
CONSULTING ENGINEERS  
2930 DIXIE CHOCOLEE BOULEVARD  
WEST PALM BEACH, FLORIDA 33411

SECTION 36